



ALSONIC

Ultrasonic Building Automation Water Meter

ALSONIC MINI

GENERAL

SMARTMEASUREMENT™ ALSONIC MINI are designed for small pipes as well as a better solution where small pipes ultrasonic technology. There is no need for coupling gels used for clamp on transducers. The plug and play method uses a circular magnetic steel to achieve better contact between the transducers and the pipe wall. It takes only 2-3 minutes reducing considerable install time compared to clamp-on transducers.

The Alsonic Mini has individual fittings for pipes of 1/4-3" (8-80mm), OLED display, analog and MODBUS outputs. The Alsonic Mini is designed for the chemical, Di-water, food and beverage or applications for small pipes and low flows of relatively clean liquid or where contact with the fluid must be avoid. ALSONIC MINI can be used in many material such as stainless steel pipe, carbon steel, copper pipe, plastic pipe (PVC, PVDF, PPR, PPH, HDPE, etc.)



SPECIFICATIONS

- | | | | |
|------------------------|---|-------------------------|--|
| • Measuring Principle: | Transit time ultrasonic | • Cable length: | 1.8m |
| • Model: | MINI | • Keypad: | Four light touch buttons |
| • Flow range: | 0.1 m/s~5.0 m/s | • Screen: | OLED 128*64 display screen |
| • Accuracy: | ±2.0% reading | • Units: | Metric and imperial units are available,
Cubic Meters (m³), Liters(L),
USA Gallons(GAL)/hour, /min,
Default unit setting: m³ /h |
| • Repeatability: | 0.8% | • Totalizer: | Six bit digit |
| • Pipe size: | 1/4-3" (8-80mm) | • Piper material: | Stainless steel pipe, carbon steel pipe,
copper pipe, plastic pipe |
| • Data storage: | Daily, monthly, and attual, total, etc. | • Environment temp: | 0°C~50°C (32°F~122°F) |
| • Analog output: | 4~20mA, Maximum load: 600Ω | • Medium temp: | 0°C~50°C (32°F~122°F) |
| • Alarm output: | OCT, Upper and lower limit alarm
function (optional) | • Environment humidity: | 0-95% relative humidity,without
condensation |
| • Communication: | RS485, Support modbus
communication protocol | | |
| • Power supply: | 24VDC | | |
| • Case material: | Aluminum alloy | | |

ALSONIC COMPONENTS

MINI



Overall style



ALSONIC



Upper bracket



Base bracket



Connecting cables

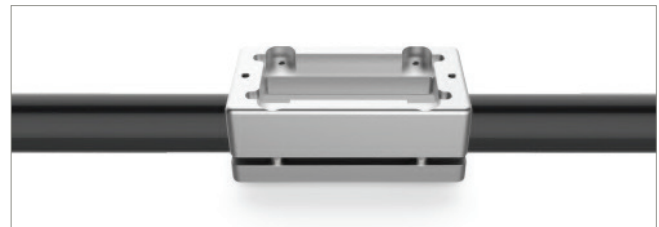
INSTALLATION STEPS

■ Clean the tube



Make sure there are no dirt, paint, or other stains on the surface.

■ Install the bracket



Align flow meter to the pipe, Install screw on top of the bracket, the bottom part of the bracket will automatically connect with the top. tighten four M4 screws.

■ Installation



Take the cover off the sensor, put the flow meter into Upper bracket, and tighten two M4 screws.

■ Connect the cable



Take out the cable, connect it to the socket, and tighten up.

ALSONIC SETTING

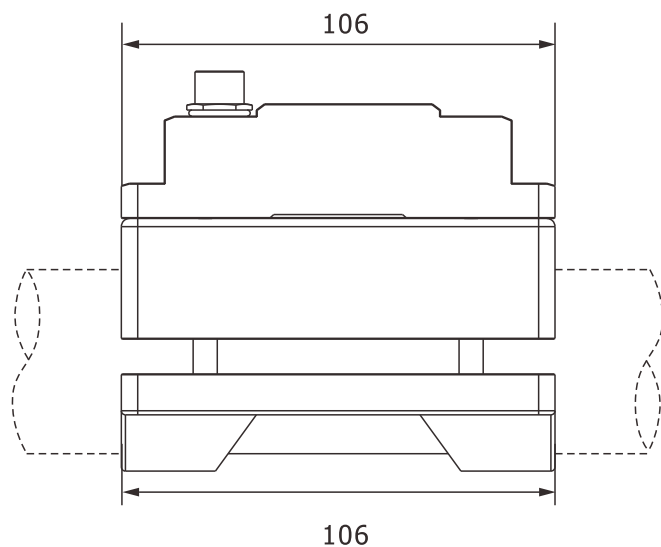
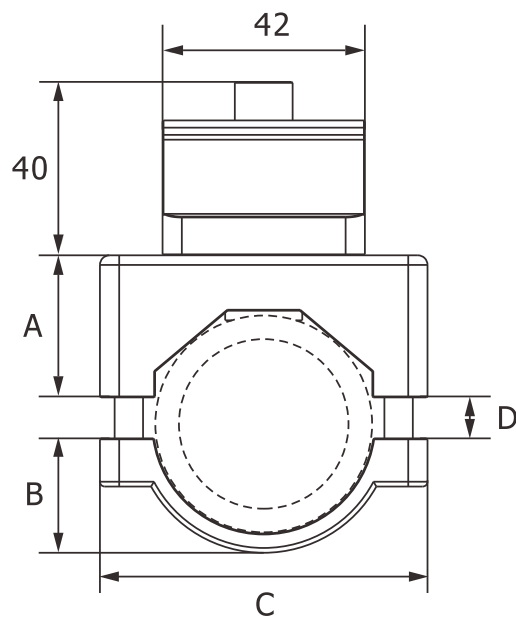
■ DISPLAY



■ Dimensions:

Model	A (mm)	B (mm)	C (mm)	D(mm)	
				min	max
DN8	25	10	58	1.5/Φ9.53	6/Φ14.03
DN10	25	10	58	1/Φ12.7	6/Φ17.7
DN15	25	10	58	1/Φ12.7	6/Φ17.7
DN20	25	10	58	1/Φ16.5	7.5/Φ23
DN25	25	15	58	1/Φ25	4/Φ28
DN32	28.5	18.5	58	1/Φ32	4/Φ35
DN40	29.5	24	68	1/Φ38	9/Φ45
DN50	36	27	78	1/Φ48	7/Φ54
DN65	41	32	91	1.5/Φ58	8.5/Φ64

ALSONIC MINI, is designed for various pipe diameters and material. The plug and play feature installation as well your individual application settings are preset before shipment.. There is no need to reset the electronics.



Please contact your **SmartMeasurement** application engineer
You also need to provide the following information:

TYPE OF FLUID
FULL-SCALE FLOW RATE
LINE SIZE
PRESSURE & TEMPERATURE

Please provide the name of your fluid, including operating density and viscosity

Please provide the max and min flow rate, normal flow rate also

Please provide the line size and connection

We will calibrate your flow meter as close to your operating conditions as possible

ALSONIC-MINI SERIES						
EXAMPLE: ALSONIC-MINI-EG-MINI						
ALSONIC-MINI	**	**	**	**		DESCRIPTION
Standard clamp on flow meter with display, DC power, IP54	Mini				Flowmeter type	
Standard clamp on energy meter with display, DC power, IP54	EG-Mini					
For outer diameter ϕ6.35		4	Transducers			
For outer diameter ϕ9.35~14.03		8				
For outer diameter ϕ12.7~17.7		10				
For outer diameter ϕ16.5~23.0		15				
For outer diameter ϕ25.0~28.0		20				
For outer diameter ϕ32.0~35.0		25				
For outer diameter ϕ38.0~45.0		32				
For outer diameter ϕ48.0~54.0		40				
For outer diameter ϕ58.0~64.0		50				
For outer diameter ϕ72.0~78.0		65				
For outer diameter ϕ80.0~92.0		80				
Other pipe size transducer		**				
No cable			NC	Signal Cable Length		
1.8m Cables			C1			
m cables up to +50°C			C			
Standard 4~20mA and RS486				NN	Output	
Standard 4~20mA and RS486,with OCT options				OT		
Other output				**		
Standard 2% RD meter for 0~50°C (32~122°F)					NN	Options
Remote style					RE	
Thickness gauge					TT	
Other options					**	

